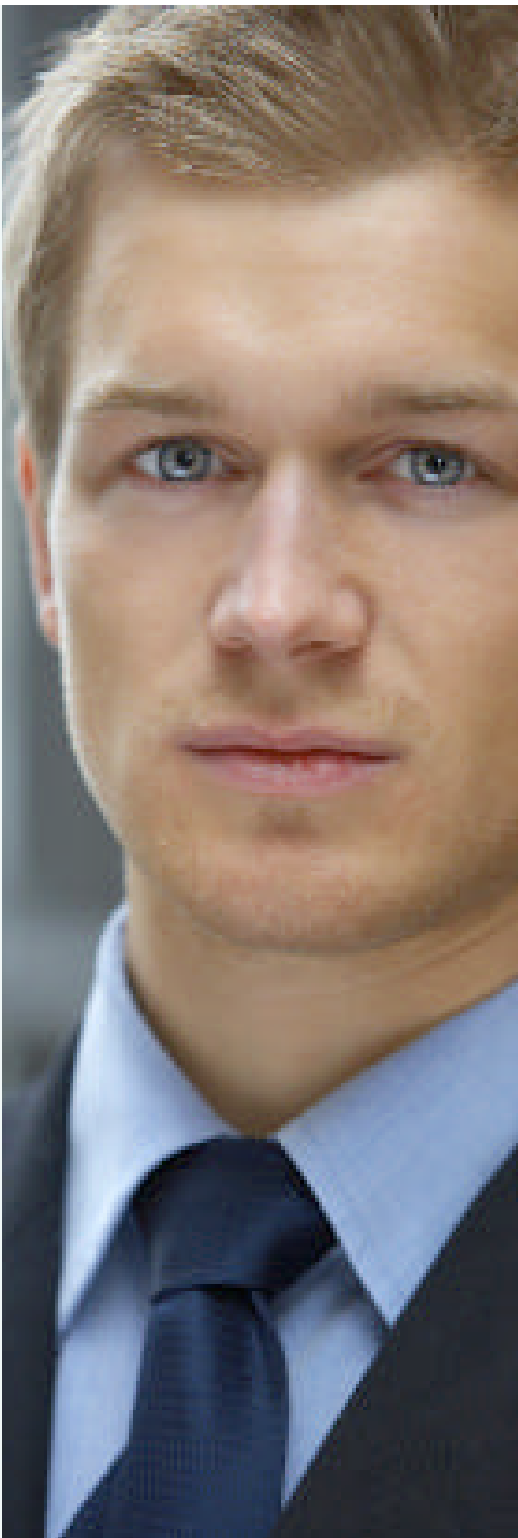


The pinnacle of professional recruiting.



**Experience.
Technology.
Global Networking.**
The pinnacle of
professional recruiting.



1310 Raeford Rd. Suite #4
Fayetteville, NC 28305
910.484.4101
fax: 910.484.3272
genie@gmarecruiters.com



Specialized Recruiting Services



Our Mission:

"Genie Matthews & Associates strive to establish and maintain mutual recognition from client companies and candidates as a superior provider of technical recruiting resources."

Experience...

over twenty-five years in professional recruiting provides Genie Matthews & Associates with invaluable knowledge and connections that can only be cultivated through time.

Technology...

customized database researching, e-searching networking, referencing, and global partnering.

Globalization...

as CEO of NPA, The Worldwide Recruiting Network, Genie Matthews fully utilizes the benefits of an affiliation with a global network with over 350 firms and thousands of consultants on six continents.



Professional recruiters who partner premiere engineers, scientists, managers, human resources, marketing and sales, and environmental health and safety specialists with companies that **change our world.**



Industries Include:

Chemical
Fiber/Textile
Food
Manufacturing
Minerals/Mining
Paint/Coatings
Petrochemical
Pharmaceutical/Biotech
Plastics/Resins
Pulp & Paper
Refinery



Customization is our competitive advantage.

Familiarity

Knowing your company from the inside out. First, Genie Matthews & Associates takes the time to understand your business, and then they define the parameters of your employment needs.

Versatility

Superior recruiting is a culmination of art and technology. The art lies in effective communication achieved through compassion, insight, and focus on achieving optimal results. Genie Matthews & Associates combine this art with cutting edge database technology to provide unparalleled recruiting.

Flexibility

Every businesses' needs are unique. Genie Matthews & Associates pride themselves on constructing an individualized recruitment strategy based on your distinctive climate, structure, and objectives.